



RONWA
ART PROJECTS

Pierre le Riche
My Body Is Not Your Temple

SEPTEMBER 12—OCTOBER 30, 2025

The Worshipping, 2025
Acrylic yarn on polyester cloth
165 x 175 cm | 55 1/8 x 67 3/4 in.
6,500 Euro



RENEWA
ART PROJECTS

The Decision, 2025

Acrylic yarn on polyester cloth

164 x 128 cm | 64 5/8 x 50 3/8 in

4,900 Euro

RONWA
ART PROJECTS



The Grappling, 2025

Acrylic yarn on polyester cloth

140 x 172 cm | 55 1/8 x 67 3/4 in

5,700 Euro



RONWA
ART PROJECTS

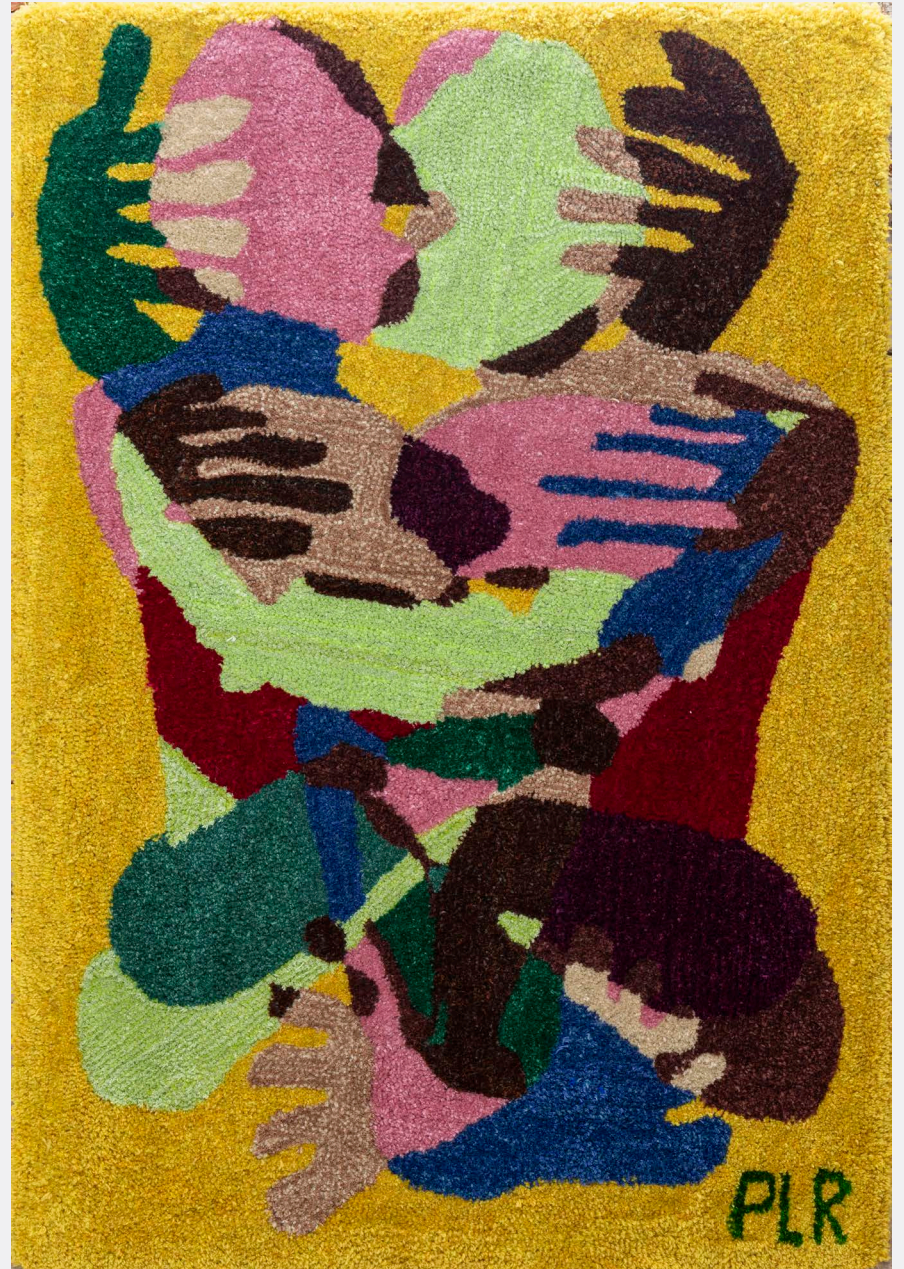
Absorb, 2025

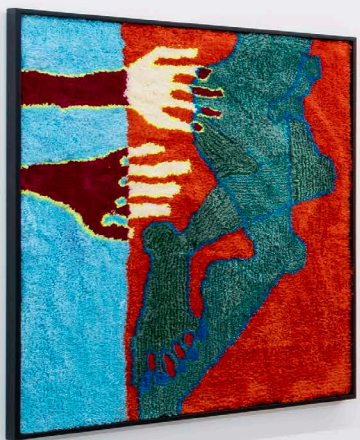
Acrylic yarn on polyester cloth

115 x 80 cm | 45 1/4 x 31 1/2 in

3,400 Euro

RONWA
ART PROJECTS





RONWA
ART PROJECTS





RONWA
ART PROJECTS



Intersection Study 1, 2025

Acrylic yarn on polyester cloth

70 x 80 cm | 27 1/2 x 31 1/2 in.

Framed: 74 x 84 cm | 29 1/8 x 33 1/8 in

1,700 Euro

RONEWA
ART PROJECTS

Intersection Study 2, 2025

Acrylic yarn on polyester cloth

80 x 70 cm | 31 1/2 x 27 1/2 x in

Framed: 84 x 74 cm | 33 1/8 x 29 1/8 in

1,700 Euro

RONWA
ART PROJECTS



Intersection Study 3, 2025

Acrylic yarn on polyester cloth

80 x 70 cm | 31 1/2 x 27 1/2 x in

Framed: 84 x 74 cm | 33 1/8 x 29 1/8 in

1,700 Euro

RONWA
ART PROJECTS



Intersection Study 4, 2025

Acrylic yarn on polyester cloth

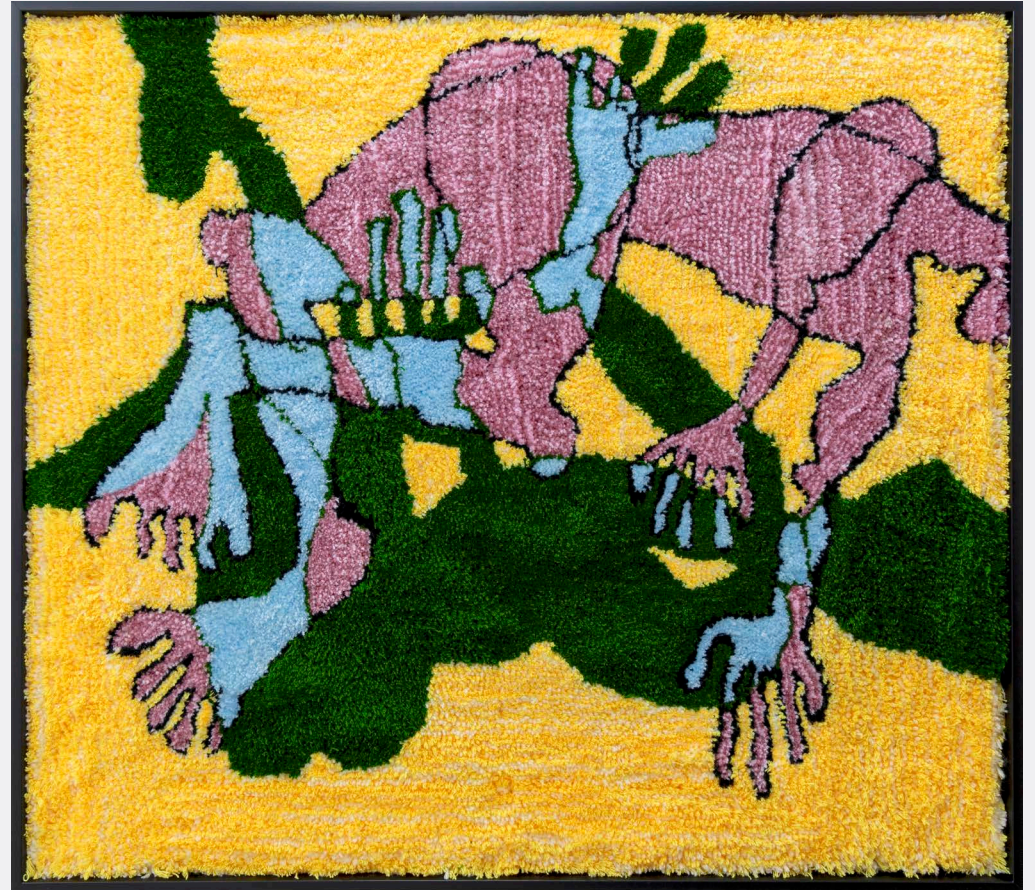
80 x 70 cm | 31 1/2 x 27 1/2 x in

Framed: 84 x 74 cm | 33 1/8 x 29 1/8 in

1,700 Euro

RONWA
ART PROJECTS





Study for The Grappling, 2025

Acrylic yarn on polyester cloth

70 x 80 cm | 27 1/2 x 31 1/2 in.

Framed: 74 x 84 cm | 29 1/8 x 33 1/8 in

1,700 Euro

RONWA
ART PROJECTS



Pierre le Riche

b. 1986, Gqeberha, South Africa

RONWA
ART PROJECTS

Pierre le Riche is a multidisciplinary artist working across modes of sculpture and installation, widely recognized for his use of textiles and thread. Identity is woven into and essential to his practice; much of his work has been aimed at confronting themes of colonialism and race, as well as challenging norms and associations around gender and sexuality. For his recent body of fiber-based work, le Riche creates vibrant and provocative figurative tapestries that center his queer identity while reflecting on the complexities of belonging in a contemporary world.

My body Is Not Your Temple, le Riche's second solo exhibition at Ronewa Art Projects, features a powerful new series of wall tapestries that deepens le Riche's inquiry into the body as a site of identity and contradiction.

In these works, le Riche is investigating how our bodies interact with each other and, in particular, how queer bodies interact with the world. The figures are layered and fragmented by contrasting colors, as if cloaked in a "queered camouflage." They are shapeshifters, moving between personal and public realms.

Le Riche's characters are rudimentary and cartoonish, yet are emotionally fraught—nude, contorted, and suspended in psychologically charged color spaces. Made of tufted wool, the tapestries foreground a material associated with domesticity and comfort, creating a tension between their tactile softness and the emotional weight his figures convey. The result is a body of work that is vivid and evocative, laced with tenderness, vulnerability, and intimacy.

Le Riche holds a Master of Fine Arts with distinction from the University of Cape Town and has since worked as a full-time artist, curator, and potter. He has exhibited in solo and group shows across South Africa and abroad, participated in international art fairs, including 1-54 in London and AKA in Paris, and created installations for global brands such as Daimler and Cartier. His large-scale thread installation Rainbow Rooms has been part of traveling exhibitions in the USA and China since 2018.

